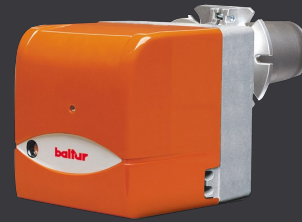


Burners

CODE 35610010

**BTL 14 50HZ**



Diesel burner. Single-stage operation.

Regulating combustion air and blast-pipe.

Combustion air intake with throttle damper. Manual adjusting of the air flow rate.

Fully closing air damper on shutdown to avoid loss of heat through the chimney.

Maintenance facilitated by the possibility of removing the combustion head without having to remove the burner from the boiler.

Sliding boiler coupling flange to adapt the blast-pipe to the various types of boilers.

Device made of sound-absorbing material to reduce fan noise.

Sound-proof plastic protective cover.

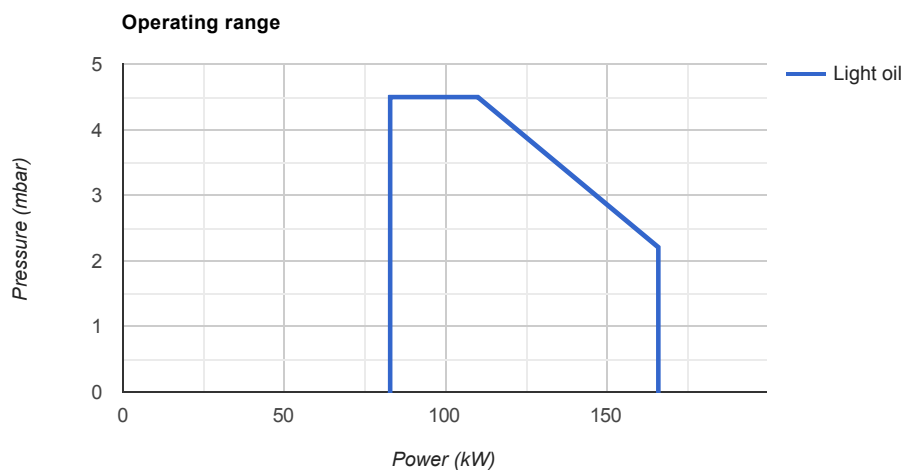
Fuel supply circuit made of gear pump with pressure adjustment and shut-off valves

Flame detection by photoresistance.

7-pole socket for burner electric and thermostatic supply.

Electric protection rating:

## Operating range



## Technical data

Tipo articolo	Diesel burner. Single-stage operation.
Regolazione aria e testa	Regulating combustion air and blast-pipe.
Regolazione aria	Combustion air intake with throttle damper. Manual adjusting of the air flow rate.
Chiusura aria	Fully closing air damper on shutdown to avoid loss of heat through the chimney.

Fuel	Gasolio
Operation	Monostadio
Minimum Thermal Power (kW) to ErP	83
Maximum Thermal Power (kW) to ErP	166
Min flow rate (Sm <sup>3</sup> /H)	7
Max flow rate (Sm <sup>3</sup> /H)	14
Manutenzione facilitata	Maintenance facilitated by the possibility of removing the combustion head without having to remove the burner from the boiler.
Max Viscosity (°E)	1.5
Flangia	Sliding boiler coupling flange to adapt the blast-pipe to the various types of boilers.
Antirumore	Device made of sound-absorbing material to reduce fan noise.
Coperchio	Sound-proof plastic protective cover.
Circuito combustibile	Fuel supply circuit made of gear pump with pressure adjustment and shut-off valves
Controllo fiamma	Flame detection by photoresistance. 7-pole socket for burner electric and thermostatic supply.
Protezione elettrica	Electric protection rating:
Electric power supply type	AC
No. of Phases	1N
Power Supply Voltage (V)	230
Power Supply Frequency (Hz)	50
Fan Motor Power (kW)	0.18
Weight without packaging (kg)	17
Weight with packaging (kg)	18
Width (mm)	780
Depth (mm)	370
Height (mm)	410