

Specifications

Port size (G)	Orifice (mm)	CV value	Pressure difference (Bar)				Max. temperature (°C)	Power		Model		Main dimension Length x Width x Height Ax B x H (mm)
			Max. working pressure					AC 220	DC 24V	220VAC 50/60Hz		
			Air	Gas	Water, liquid	Hot oil ≤20cSt				Brass	Stainless steel	
1/8"	3	0.23	0	13	13	10	80	22	13	SLP06-030E2	SLP06-030E2S1	
	3	0.23	0	13	13	-	130	22	13	SLP06-030E2E	SLP06-030E2S1E	
	3	0.23	0	13	13	10	120	22	13	SLP06-030E2V	SLP06-030E2S1V	
1/4"	3	0.23	0	13	13	10	80	22	13	SLP08-030E2	SLP08-030E2S1	
	3	0.23	0	13	13	-	130	22	13	SLP08-030E2E	SLP08-030E2S1E	
	3	0.23	0	13	13	10	120	22	13	SLP08-030E2V	SLP08-030E2S1V	
	10.5	1.47	0	10	10	10	80	22	13	SLP08-105E2	---	
	10.5	1.47	0	10	10	-	130	22	13	SLP08-105E2E	---	
	10.5	1.47	0	10	10	10	120	22	13	SLP08-105E2V	---	
3/8"	3	0.3	0	13	13	10	80	22	13	SLP10-030E2	SLP10-030E2S1	
	3	0.3	0	13	13	10	130	22	13	SLP10-030E2E	SLP10-030E2S1E	
	3	0.3	0	13	13	10	120	22	13	SLP10-030E2V	SLP10-030E2S1V	
	4	0.6	0	8	8	6	80	22	13	SLP10-040E2	SLP10-040E2S1	
	4	0.6	0	8	8	6	130	22	13	SLP10-040E2E	SLP10-040E2S1E	
	4	0.6	0	8	8	6	120	22	13	SLP10-040E2V	SLP10-040E2S1V	
	10.5	1.68	0	10	10	10	80	22	13	SLP10-105E2	---	
	10.5	1.68	0	10	10	-	130	22	13	SLP10-105E2E	---	
	10.5	1.68	0	10	10	10	120	22	13	SLP10-105E2V	---	
	13	4.5	0.5	16	16	13	80	22	13	SLP10-130E2	SLP10-130E2S1	66 x 48 x 112
	13	4.5	0.5	16	16	13	130	22	13	SLP10-130E2E	SLP10-130E2S1E	66 x 48 x 112
	13	4.5	0.5	16	16	13	120	22	13	SLP10-130E2V	SLP10-130E2S1V	66 x 48 x 112
1/2"	10.5	1.75	0	10	10	10	80	22	13	SLP15-105E2	---	
	10.5	1.75	0	10	10	-	130	22	13	SLP15-105E2E	---	
	13	4.5	0.5	16	16	13	80	22	13	SLP15-130E2	SLP15-130E2S1	66 x 48 x 112
	13	4.5	0.5	16	16	13	130	22	13	SLP15-130E2E	SLP15-130E2S1E	66 x 48 x 112
3/4"	20	7.6	0.5	16	16	13	80	22	13	SLP20E2	SLP20E2S1	75 x 58 x 118
	20	7.6	0.5	16	16	13	130	22	13	SLP20E2E	SLP20E2S1E	75 x 58 x 118
	20	7.6	0.5	16	16	13	120	22	13	SLP20E2V	SLP20E2S1V	75 x 58 x 118
1"	25	12	0.5	16	16	13	80	22	13	SLP25E2	SLP25E2S1	96 x 70 x 131
	25	12	0.5	16	16	13	130	22	13	SLP25E2E	SLP25E2S1E	96 x 70 x 131
	25	12	0.5	16	16	13	120	22	13	SLP25E2V	SLP25E2S1V	96 x 70 x 131
1-1/4"	35	22	0.5	16	16	13	80	22	13	SLP32-350E2	---	131 x 96 x 146
	35	22	0.5	16	16	13	130	22	13	SLP32-350E2E	---	131 x 96 x 146
	35	22	0.5	16	16	13	120	22	13	SLP32-350E2V	---	131 x 96 x 146
1-1/2"	40	30	0.5	16	16	13	80	22	13	SLP40E2	SLP40E2S1	131 x 96 x 146
	40	30	0.5	16	16	13	130	22	13	SLP40E2E	SLP40E2S1E	131 x 96 x 146
	40	30	0.5	16	16	13	120	22	13	SLP40E2V	SLP40E2S1V	131 x 96 x 146
2"	50	48	0.5	16	16	13	80	22	13	SLP50E2	SLP50E2S1	165 x 120 x 167
	50	48	0.5	16	16	13	130	22	13	SLP50E2E	SLP50E2S1E	165 x 120 x 167
	50	48	0.5	16	16	13	120	22	13	SLP50E2V	SLP50E2S1V	165 x 120 x 167
Flange connection	25	12	0.5	16	16	13	80	22	13	---	SLPF25E2S1	134 x 110 x 160
	25	12	0.5	16	16	13	130	22	13	---	SLPF25E2S1E	134 x 110 x 160
	25	12	0.5	16	16	13	120	22	13	---	SLPF25E2S1V	134 x 110 x 160
Flange connection	35	22	0.5	16	16	13	80	22	13	---	SLPF32-350E2S1	160 x 135 x 175
	35	22	0.5	16	16	13	130	22	13	---	SLPF32-350E2S1E	160 x 135 x 175
	35	22	0.5	16	16	13	120	22	13	---	SLPF32-350E2S1V	160 x 135 x 175
Flange connection	40	30	0.5	16	16	13	80	22	13	---	SLPF40E2S1	160 x 145 x 180
	40	30	0.5	16	16	13	130	22	13	---	SLPF40E2S1E	160 x 145 x 180
	40	30	0.5	16	16	13	120	22	13	---	SLPF40E2S1V	160 x 145 x 180
Flange connection	50	48	0.5	16	16	13	80	22	13	---	SLPF50E2S1	200 x 160 x 207
	50	48	0.5	16	16	13	130	22	13	---	SLPF50E2S1E	200 x 160 x 207
	50	48	0.5	16	16	13	120	22	13	---	SLPF50E2S1V	200 x 160 x 207
Flange connection	65	52	0.5	12	12	8	80	33	20	---	SLPF65E2S1	250 x 185 x 250
	65	52	0.5	12	12	8	120	33	20	---	SLPF65E2S1E	250 x 185 x 250
	65	52	0.5	12	12	8	120	33	20	---	SLPF65E2S1V	250 x 185 x 250
Flange connection	80	80	0.5	12	12	8	80	33	20	---	SLPF80E2S1	270 x 185 x 262
	80	80	0.5	12	12	8	120	33	20	---	SLPF80E2S1E	270 x 185 x 262
	80	80	0.5	12	12	8	120	33	20	---	SLPF80E2S1V	270 x 185 x 262
Flange connection	100	128	0.5	12	12	8	80	33	20	---	SLPF100E2S1	342 x 222 x 287
	100	128	0.5	12	12	8	120	33	20	---	SLPF100E2S1E	342 x 222 x 287
	100	128	0.5	12	12	8	120	33	20	---	SLPF100E2S1V	342 x 222 x 287

How to Order?

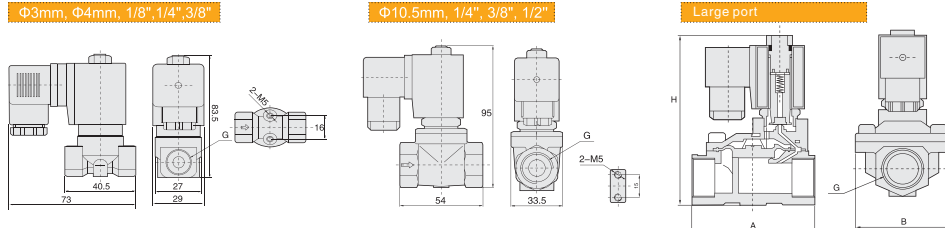
Series No.	Port size	Original status	Orifice	ID Code	Voltage	Valve body material	Seal material	Thread type	
SLP: Thread connection SLPF: Flange connection	06: 1/8" 25: 1" 08: 1/4" 32: 1-1/4" 10: 3/8" 40: 1-1/2" 15: 1/2" 50: 2" 20: 3/4"	Blank: NC H: NO	010: 1mm 015: 1.5mm 025: 2.5mm 030: 3mm 040: 4mm 105: 10.5mm 130: 13mm 200: 20mm (Note: cancel if same with port size)	Blank: Standard type N: Low power type	E1: AC110V E2: AC220V E3: AC380V E4: DC24V E5: DC12V	E6: AC36V E7: AC24V E8: DC110V E9: DC48V E10: DC36V	Blank: Brass S1: SS316	Blank: NBR E: EPDM V: VITON	Blank: G P: PT T: NPT

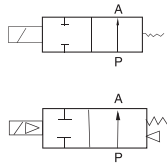
Order Example:  
SLP series solenoid valve, 1/2 port size, NC, 13mm orifice, standard type, AC110V, Brass valve body, NBR seal, G thread, ERP code is: SLP15-130E1

Product Features

- \* Normal close, available body: brass, SS316
- \* Multiple seals are available for different medium
- \* Wide size range from 1/8" to 2", with both thread and flange connection
- \* Diaphragm pilot solenoid valve, with lower working pressure
- \* To reduce the power consumption of 80% energy-saving

Main Dimensions

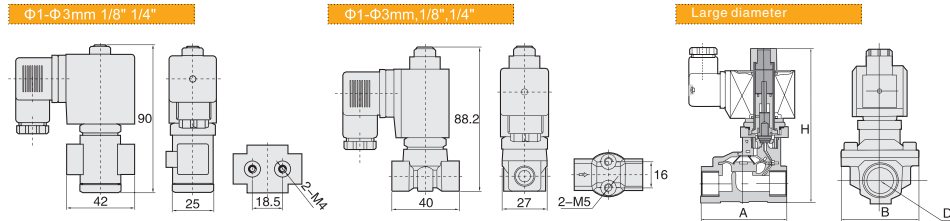




Product Features

- \* Normal open, available body: brass, SS316
- \* Multiple seals are available for different medium
- \* Wide size range from 1/8" to 2" , with both thread and flange connection
- \* Diaphragm pilot solenoid valve, with lower working pressure
- \* To reduce the power consumption of 80% energy-saving

Main Dimensions



Specifications

Port size (G)	Orifice (mm)	CV value	Pressure difference ( Bar )				Max. temperature (°C)	Power		Model		Main dimension Length x Width x Height AxBxH(mm)
			Min. pressure	Max. working pressure				VA	W	220VAC 50/60Hz		
				Air, Gas	Water, Hot water, Liquid	Light oil ≤20CST				Brass	Stainless steel	
1/8"	1	0.04	0	30	30	25	80	22	13	SLP06H-010E2	SLP06H-010E2S1	
	1	0.04	0	30	30	-	130	22	13	SLP06H-010E2E	SLP06H-010E2S1E	
	1	0.04	0	30	30	25	120	22	13	SLP06H-010E2V	SLP06H-010E2S1V	
	1.5	0.09	0	20	20	15	80	22	13	SLP06H-015E2	SLP06H-015E2S1	
	1.5	0.09	0	20	20	-	130	22	13	SLP06H-015E2E	SLP06H-015E2S1E	
	1.5	0.09	0	20	20	15	120	22	13	SLP06H-015E2V	SLP06H-015E2S1V	
	2.5	0.2	0	15	15	12	80	22	13	SLP06H-025E2	SLP06H-025E2S1	
	2.5	0.2	0	15	15	-	130	22	13	SLP06H-025E2E	SLP06H-025E2S1E	
	2.5	0.2	0	15	15	12	120	22	13	SLP06H-025E2V	SLP06H-025E2S1V	
	3	0.25	0	12	12	10	80	22	13	SLP06H-030E2	SLP06H-030E2S1	
	3	0.25	0	12	12	-	130	22	13	SLP06H-030E2E	SLP06H-030E2S1E	
	3	0.25	0	12	12	10	120	22	13	SLP06H-030E2V	SLP06H-030E2S1V	

Specifications

Port size (G)	Orifice (mm)	CV value	Pressure difference ( Bar )				Max. temperature (°C)	Power		Model		Main dimension Length x Width x Height AxBxH(mm)	
			Min. pressure	Max. working pressure				VA	W	220VAC 50/60Hz			
				Air, Gas	Water, Hot water, Liquid	Light oil ≤20CST				Brass	Stainless steel		
1/4"	1	0.04	0	30	30	25	80	22	13	SLP08H-010E2	SLP08H-010E2S1		
	1	0.04	0	30	30	-	130	22	13	SLP08H-010E2E	SLP08H-010E2S1E		
	1	0.04	0	30	30	25	120	22	13	SLP08H-010E2V	SLP08H-010E2S1V		
	1.5	0.09	0	20	20	15	80	22	13	SLP08H-015E2	SLP08H-015E2S1		
	1.5	0.09	0	20	20	-	130	22	13	SLP08H-015E2E	SLP08H-015E2S1E		
	1.5	0.09	0	20	20	15	120	22	13	SLP08H-015E2V	SLP08H-015E2S1V		
	2.5	0.2	0	15	15	12	80	22	13	SLP08H-025E2	SLP08H-025E2S1		
	2.5	0.2	0	15	15	-	130	22	13	SLP08H-025E2E	SLP08H-025E2S1E		
	2.5	0.2	0	15	15	12	120	22	13	SLP08H-025E2V	SLP08H-025E2S1V		
	3	0.25	0	12	12	10	80	22	13	SLP08H-030E2	SLP08H-030E2S1		
	3	0.25	0	12	12	-	130	22	13	SLP08H-030E2E	SLP08H-030E2S1E		
	3	0.25	0	12	12	10	120	22	13	SLP08H-030E2V	SLP08H-030E2S1V		
	3/8"	13	4.5	0.5	13	13	8	80	22	13	SLP10H-130E2	SLP10H-130E2S1	66 x 48 x 124
		13	4.5	0.5	13	13	-	120	22	13	SLP10H-130E2E	SLP10H-130E2S1E	66 x 48 x 124
		13	4.5	0.5	13	13	8	120	22	13	SLP10H-130E2V	SLP10H-130E2S1V	66 x 48 x 124
1/2"	13	4.5	0.5	13	13	8	80	22	13	SLP15H-130E2	SLP15H-130E2S1	66 x 48 x 124	
	13	4.5	0.5	13	13	-	120	22	13	SLP15H-130E2E	SLP15H-130E2S1E	66 x 48 x 124	
	13	4.5	0.5	13	13	8	120	22	13	SLP15H-130E2V	SLP15H-130E2S1V	66 x 48 x 124	
3/4"	20	7.6	0.5	13	13	8	80	22	13	SLP20HE2	SLP20HE2S1	75 x 58 x 130	
	20	7.6	0.5	13	13	-	120	22	13	SLP20HE2E	SLP20HE2S1E	75 x 58 x 130	
	20	7.6	0.5	13	13	8	120	22	13	SLP20HE2V	SLP20HE2S1V	75 x 58 x 130	
1"	25	12	0.5	13	13	8	80	22	13	SLP25HE2	SLP25HE2S1	96 x 70 x 143	
	25	12	0.5	13	13	-	120	22	13	SLP25HE2E	SLP25HE2S1E	96 x 70 x 143	
	25	12	0.5	13	13	8	120	22	13	SLP25HE2V	SLP25HE2S1V	96 x 70 x 143	
1-1/4"	35	22	0.5	8	8	8	80	22	13	SLP32H-350E2	SLP32H-350E2S1	131 x 96 x 158	
	35	22	0.5	8	8	-	120	22	13	SLP32H-350E2E	SLP32H-350E2S1E	131 x 96 x 158	
	35	22	0.5	8	8	8	120	22	13	SLP32H-350E2V	SLP32H-350E2S1V	131 x 96 x 158	
1-1/2"	40	30	0.5	8	8	8	80	22	13	SLP40HE2	SLP40HE2S1	131 x 96 x 158	
	40	30	0.5	8	8	-	120	22	13	SLP40HE2E	SLP40HE2S1E	131 x 96 x 158	
	40	30	0.5	8	8	8	120	22	13	SLP40HE2V	SLP40HE2S1V	131 x 96 x 158	
2"	50	48	0.5	8	8	8	80	22	13	SLP50HE2	SLP50HE2S1	165 x 120 x 179	
	50	48	0.5	8	8	-	120	22	13	SLP50HE2E	SLP50HE2S1E	165 x 120 x 179	
	50	48	0.5	8	8	8	120	22	13	SLP50HE2V	SLP50HE2S1V	165 x 120 x 179	
Flange connection	25	12	0.5	8	8	8	80	22	13	---	SLPF25HE2S1	134 x 110 x 172	
	25	12	0.5	8	8	-	120	22	13	---	SLPF25HE2S1E	134 x 110 x 172	
	25	12	0.5	8	8	8	120	22	13	---	SLPF25HE2S1V	134 x 110 x 172	
Flange connection	35	22	0.5	8	8	8	80	22	13	---	SLPF32-350HE2S1	160 x 135 x 187	
	35	22	0.5	8	8	-	120	22	13	---	SLPF32-350HE2S1E	160 x 135 x 187	
	35	22	0.5	8	8	8	120	22	13	---	SLPF32-350HE2S1V	160 x 135 x 187	
Flange connection	40	30	0.5	8	8	8	80	22	13	---	SLPF40HE2S1	160 x 145 x 192	
	40	30	0.5	8	8	-	120	22	13	---	SLPF40HE2S1E	160 x 145 x 192	
	40	30	0.5	8	8	8	120	22	13	---	SLPF40HE2S1V	160 x 145 x 192	
Flange connection	50	48	0.5	8	8	8	80	22	13	---	SLPF50HE2S1	200 x 160 x 219	
	50	48	0.5	8	8	-	120	22	13	---	SLPF50HE2S1E	200 x 160 x 219	
	50	48	0.5	8	8	8	120	22	13	---	SLPF50HE2S1V	200 x 160 x 219	